

Project Development Screening Report



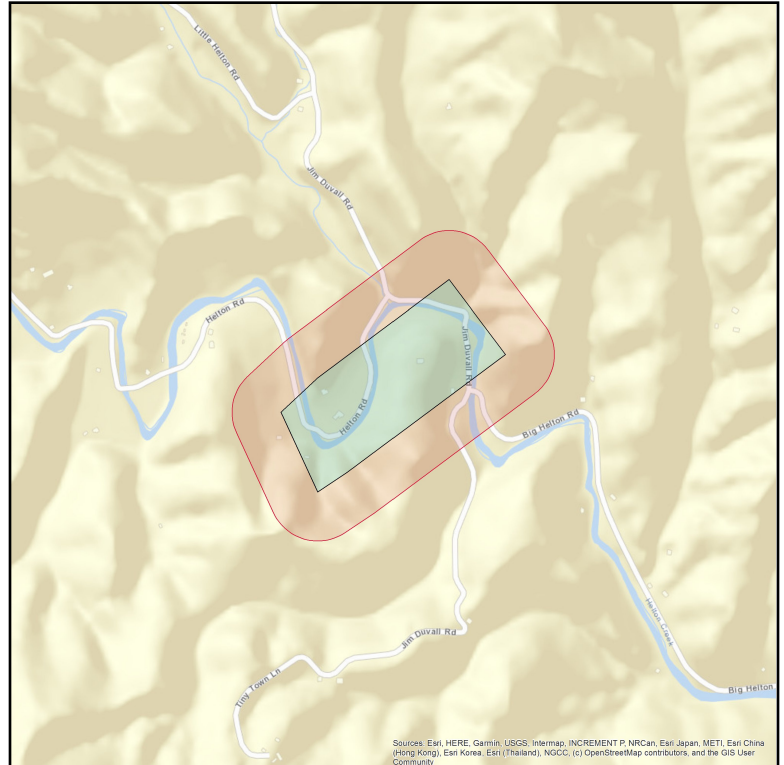
This report is for high-level screening purposes only. Staff and consultants must continue to adhere to NCDOT standard operating procedures including, but not limited to, ETRACS requests and field validations.

Report Date: 06/25/2021

Bridges 040048 and 040304

The layers included help pre-screen potential resource conflicts and identify preliminary impacts for Bridges 040048 and 040304.

County: Ashe
Division: 11
Study Area Size: 91.0 Acres
Buffer Size: 500 Feet



EPA Level III Ecoregion: Blue Ridge
EPA Level IV Ecoregion: New River Plateau
HUC8: 05050001
Riparian Buffer: N/A
CAMA: No
Airport within 4 miles: N/A

Human Environment

Geo Environmental	Feature Count	Total Coverage	Nearest Feature
EPA NEPA Assist RADInfo	0	0	0
EPA NEPA Assist Toxic Releases (TRI)	0	0	0
NC Brownfield Agreement Locations	0	0	0
NC Brownfields Boundary	0	0 ac	0
NC Brownfields Locations	0	0	0
NC DEQ Active Permitted Landfills	0	0	0
NC DEQ Charlotte Brownfield Agreement Boundaries	0	0 ac	0
NC DEQ Dry Cleaning Solvent Cleanup Act Sites	0	0	0
NC DEQ Federal Remediation Branch Sites	0	0	0
NC DEQ Groundwater Sources	0	0	0
NC DEQ Hazardous Waste Sites	0	0	0
NC DEQ Inactive Hazardous Sites	0	0	0
NC DEQ Manufactured Gas Plant	0	0	0
NC Deq Non-UST AST Incidents	0	0	0
NC DEQ Pre Regulatory Landfill Sites	0	0	0
NC DEQ Underground Storage Tank Incidents	0	0	0
NC USGS Gauge Stations 2008	0	0	0
Other Permitted Solid Waste Facilities (Open)	0	0	0
Sanitary Sewer Systems Discharges	0	0	0
Historic Architecture and Archaeology	Feature Count	Total Coverage	Nearest Feature
NC Historic Preservation Office Surveyed Only Points	1	N/A	332.7 ft
NC Historic Preservation NR Points	0	0	386.8 ft
NC Historic Preservation Office Local District Boundaries	0	0	0
NC Historic Preservation Office Local Points	0	0	0
NC Historic Preservation Office NR Boundaries	0	0	0
NC Historic Preservation Office NR DOE Site Boundaries Poly	0	0	708.0 ft
NC Historic Preservation Office NR DOE Site Points	0	0	1119.4 ft
NC Historic Preservation Office NR SL Site Boundaries Poly	0	0	708.0 ft
NC Historic Preservation Office SL Points	0	0	1119.4 ft
NCDOT ATLAS NC Cemeteries	0	0	300.5 ft
Public Property	Feature Count	Total Coverage	Nearest Feature
NC Mountains to Sea Trail	0	0 ft	0
Utilities	Feature Count	Total Coverage	Nearest Feature
NCDOT ATLAS NC Utility Power Providers	1	91.0 ac	N/A
NC DEQ Dams	0	0	0

NC Surface Water Intakes	0	0	0
NC Water Supply Intakes	0	0	0
NCDOT ATLAS NC Utilities University Points	0	0	0
NCREDC Water Distribution Systems Water Pumping Stations 1997	0	0	0
Sanitary Sewer Systems Land Application Areas	0	0	0
Sanitary Sewer Systems Pumping Stations	0	0	0

Natural Environment

Conservation Area	Feature Count	Total Coverage	Nearest Feature
NC DEQ Outstanding Resource Water Management Zones	1	91.0 ac	N/A
NC Natural Heritage Natural Areas (NHNA)	1	4.0 ac	N/A
Blue Ridge Forever Appalachian Trail Centerline	0	0 ft	0
Conservation Easements (National Conservation Easement Database)	0	0	0
NC Critical Areas	0	0	0
NC DEQ Unique Wetlands	0	0	0
NC Natural Heritage Program Managed Areas	0	0	0
USFWS National Wildlife Refuges	0	0	0
Hydrography	Feature Count	Total Coverage	Nearest Feature
North Carolina Effective Flood zones	9	91.0 ac	518.2 ft
NCDOT Hosted NC DEQ 303d and 305b Streams	4	8286.8 ft	1427.3 ft
USACE Trout Watersheds	1	91.0 ac	2321.4 ft
NC DEQ DRAFT 2016 DWR 303(d) Water Quality Assessment	0	0	0
NC DEQ Water Supply Watershed I	0	0 ft	0
NC DEQ Water Supply Watershed II	0	0 ft	0
NC DEQ Water Supply Watershed III	0	0	0
NC DEQ Water Supply Watershed IV	0	0	0
NC DEQ Water Supply Watersheds	0	0	0
NC Wild and Scenic Rivers (CGIA)	0	0	0
NCDOT ATLAS NC Western Watersheds Draining to Critical Habitat	0	0	0
USACE Western NC Water Buffers	0	0 ac	0
USACE Western NC Waters	0	0 ft	0
Threatened and Endangered	Feature Count	Total Coverage	Nearest Feature
NC Natural Heritage Element Occurrences	2	4.0 ac	3747.3 ft
NCDOT ATLAS NC IPaC Critical Habitat Species	1	91.0 ac	N/A
NCDOT ATLAS NC Atlantic Sturgeon Critical Habitat	0	0	0
NCDOT ATLAS NC Mines	0	0	287.3 ft

NCDOT ATLAS NC Northern Long-Eared Bat Hibernation And Or Maternity Sites by HUC 12	0	0	0
USFWS ECOS Critical Habitat	0	0 ac	0
Water Quality	Feature Count	Total Coverage	Nearest Feature
US EPA Superfund Sites	0	0	0
Wetlands	Feature Count	Total Coverage	Nearest Feature
USFWS National Wetland Inventory	15	5.8 ac	211.2 ft

Report Metadata

Created by: SusanWestberry

Date/Time Executed: 06/25/2021 12:51 PM

Application version: 1.11.4.0

Report Disclaimer:

While the N.C. Department of Transportation strives to provide complete and accurate information, the data provided in this screening report are reported "as is." This report does not replace field data collection and data verification conducted by licensed professionals. No warranty is expressed or implied regarding the accuracy of available data for general or scientific purposes. NCDOT shall under no circumstances be responsible for any errors or omissions which may occur in these records, nor liable for any actions taken as a result of reliance upon any information contained within this web site from whatever source, or any consequences from such reliance.

How to read this report:

User-defined Project Study Area = The final polygon that the user created in the Screening Tool. This study area includes any buffers the user added within the application.

Layer Name = Layer selected for Screening. You may click the hyperlink to access additional layer details.

Field Name = Calculated result for a specific field within a layer that was selected for Screening (using Set Field).

Feature Count = Number of unique features (points, lines, and/or polygons) from a particular GIS layer that are within or intersecting the user-defined project study area.

Values displayed the Output Report: (N/A vs 0)

N/A: When this value is displayed it indicates that the calculation requested cannot be completed do to a limitation of the geometry. For example, you cannot calculate the area of a point.

0: When this value is displayed it means that the calculation was able to be performed with no limitations due to the input geometry, however the result was 0. For example, your study area did not overlap a hydrography feature, therefore the resulting overlap length is 0.

Total Coverage = Total number of linear feet (lines) or area (polygons) from a particular GIS layer that are contained within the user-defined project study area. N/A under Total Coverage refers to point layers as point layers cannot have coverage.

Nearest Feature = Distance from the boundary of the user-defined project study area to next closest feature (point, line, or polygon) for a particular GIS layer within the vicinity (1 mile) of the project study area boundary. Zero (0) under Nearest means there are no features in the project vicinity (1 mile buffer).

Availability of Web Services:

The layers referenced in this report utilize web services. If any web services were unavailable at the time of the report execution, related errors are noted in the following table:

Service Name	Service Url	Error Thrown
USGS Protected Area Database	https://services.arcgis.com/P3ePLMys2RVChkJx/ArcGIS/rest/services/PADUS_8feb2017/FeatureServer/0	Error returned from service: Token Required

Project ATLAS Natural Heritage Data Report



This report is not an official correspondence from the North Carolina Natural Heritage Program

Bridges 040048 and 040304

Species Element Occurrences with federal status in study area

Scientific Name	Common Name	Federal Status	EO Status	Sensitive Record
<i>Cryptobranchus alleganiensis alleganiensis</i>	Eastern Hellbender		Current	Y
<i>Phenacobius teretulus</i>	Kanawha Minnow		Current	N

Species Element Occurrences with federal status within 1 mile of study area

Scientific Name	Common Name	Federal Status	EO Status	Sensitive Record
<i>Cryptobranchus alleganiensis alleganiensis</i>	Eastern Hellbender		Current	Y
<i>Lilium grayi</i>	Gray's Lily		Current	N
<i>Phenacobius teretulus</i>	Kanawha Minnow		Current	N
<i>Silphium perfoliatum</i>	Northern Cup-plant		Historical	N

Report Metadata

Created by: SusanWestberry

Date/Time Executed: 06/25/2021 12:51 PM

For definitions of terms and values please refer to the North Carolina Natural Heritage Program's documentation found at: <https://ncnhde.natureserve.org/help>. To obtain or request an official correspondence from the North Carolina Natural Heritage Program, please visit <https://ncnhde.natureserve.org/>.

This report is not an official correspondence from the North Carolina Natural Heritage Program.